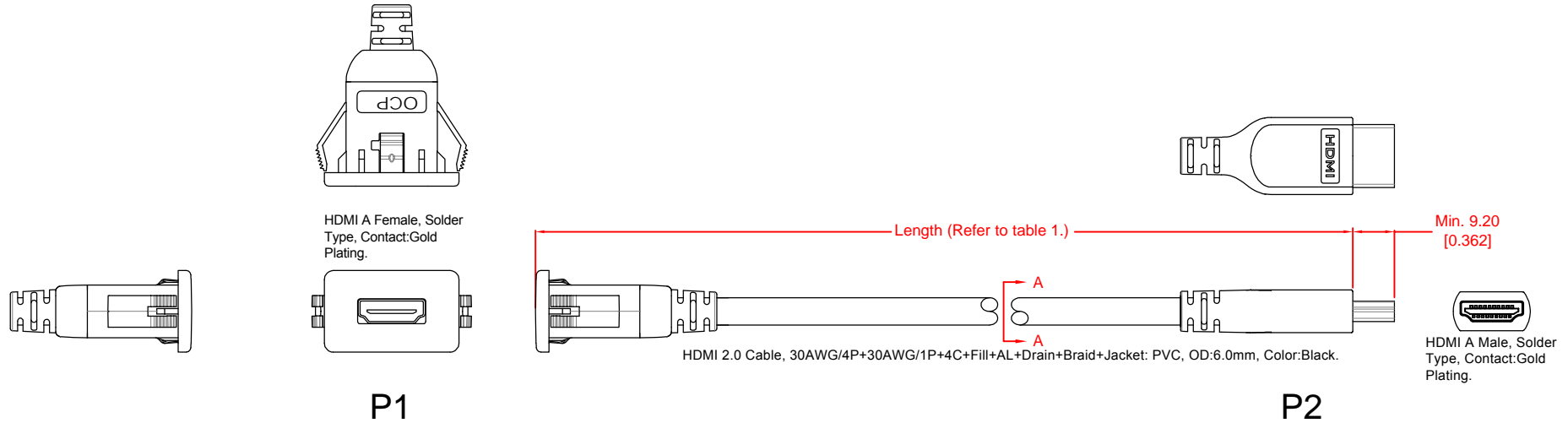


Diagram And Dimensions:



REVISIONS		
Rev.	DESCRIPTION	DATE
A	Initial Release	4 Aug, 2016
B	Revised lead wire color	6 Oct, 2016
C	Revised Table 1.	11 Oct, 2016

Electrical Characteristics:

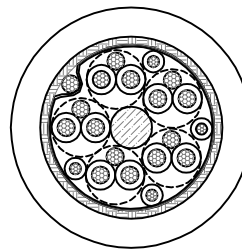
1. Contact resistance: $<1\Omega$ (0m~1m), $<2\Omega$ (1m~2m).
2. Insulation resistance: 500VDC, $>20M\Omega$.
3. Dielectric strength: 500VAC, 2mA, 0.1Sec.
4. All cable assemblies to be 100% tested for continuity, short & miswire.

Note:

1. All the materials used comply to RoHS Directive 2011/65/EU.

Technical requirement:

1. Flex life for P1 strain relief: $\pm 90^\circ$, weight load=500g, 30 cycles/minute, flex cycles at 200 times minimum.
2. Flex life for P2 strain relief: $\pm 90^\circ$, weight load=500g, 30 cycles/minute, flex cycles at 200 times minimum.
3. Pulling force between P1 overmold and cable: 20kgf min.
4. Pulling force between P2 overmold and cable: 20kgf min.
5. Tensile strength of raw cable: 40kgf.



Section A-A

Table 1.

No.	OCP P/N	Length	
1	61-00207-01	305 mm \pm 10	12 inch \pm 0.4
2	61-00207-02	610 mm \pm 20	24 inch \pm 0.8
3	61-00207-03	915 mm \pm 30	36 inch \pm 1.2
4	61-00207-06	1830 mm \pm 50	72 inch \pm 2.0
5	61-00207-10	3050 mm \pm 100	120 inch \pm 4.0

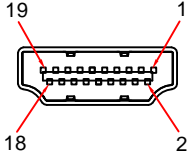
<small>UNLESS OTHERWISE SPECIFIED</small> <small>DIMENSIONS ARE IN</small> MILLIMETERS <small>(INCHES)</small> <small>TOLERANCES ARE:</small> <table border="0"> <tr> <td><small>.X</small> ± 0.5</td> <td><small>.XX</small> ± 0.02</td> </tr> <tr> <td><small>.XX</small> ± 0.20</td> <td><small>.XXX</small> ± 0.008</td> </tr> <tr> <td><small>.XXX</small> ± 0.10</td> <td><small>.XXXX</small> ± 0.004</td> </tr> </table> <small>ANGULAR $\pm 0.5^\circ$</small>	<small>.X</small> ± 0.5	<small>.XX</small> ± 0.02	<small>.XX</small> ± 0.20	<small>.XXX</small> ± 0.008	<small>.XXX</small> ± 0.10	<small>.XXXX</small> ± 0.004	<small>DRAWN BY</small> KK So <small>CHECKED BY</small> Joe Perez <small>APPROVED BY</small> Omar Acuna	<small>CONNECT WITH CONFIDENCE</small>	<small>TITLE:</small> Single HDMI 2.0 A Snap In Female To Male With Cable
	<small>.X</small> ± 0.5	<small>.XX</small> ± 0.02							
<small>.XX</small> ± 0.20	<small>.XXX</small> ± 0.008								
<small>.XXX</small> ± 0.10	<small>.XXXX</small> ± 0.004								
<small>PROPRIETARY AND CONFIDENTIAL</small> THE INFORMATION CONTAINED IN THIS DRAWING IS THE SOLE PROPERTY OF OCP CHINA. PARTIAL OR TOTAL REPRODUCTION WITHOUT THE WRITTEN PERMISSION OF OCP CHINA IS PROHIBITED.	<small>OCP P/N:</small> Refer Table 1. <small>CUSTOMER P/N:</small> - <small>CUSTOMER REV.LEVEL:</small> - <small>CUSTOMER NAME:</small> -	<small>PROJECT NO.:</small> <small>DRAWING NO.:</small> <small>REV.:</small> C							
<small>DO NOT SCALE DRAWING</small>		<small>SCALE</small> Free <small>SIZE</small> A4 <small>SHEET</small> 1 OF 2							

REVISIONS		
Rev.	DESCRIPTION	DATE
A	Initial Release	4 Aug, 2016
B	Revised lead wire color	6 Oct, 2016
C	Revised Table 1.	11 Oct, 2016

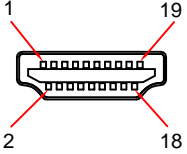
Wiring Diagram:



P1	Wire color	P2
1	White	1
3	Brown	3
2	Drain	2
4	White	4
6	Yellow	6
5	Drain	5
7	White	7
9	Blue	9
8	Drain	8
10	White	10
12	Green	12
11	Drain	11
13	White	13
15	Red	15
14	Drain	14
16	Brown	16
17	Red	17
18	Orange	18
19	Yellow	19
Shell	Shield	Shell

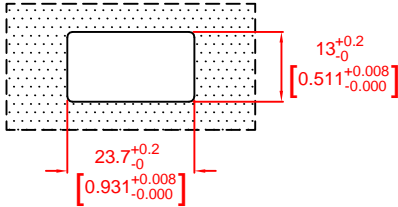


HDMI Female
(Front View)



HDMI Male
(Front View)

Recommended Panel Cut Out Size
(Panel Thickness : 0.5~2.54mm [0.02~0.1 inch])



UNLESS OTHERWISE SPECIFIED DIMENSIONS ARE IN MILLIMETERS. [INCHES]	DRAWN BY KK So		CONNECT WITH CONFIDENCE	
	TOLERANCES ARE: MILLIMETERS INCHES .X ±0.5 .XX ±0.02 .XX ±0.20 .XXX ±0.008 .XXX ±0.10 .XXXX ±0.004 ANGULAR ±0.5°		CHECKED BY Joe Perez	OCP P/N: Refer Table 1.
PROPRIETARY AND CONFIDENTIAL THE INFORMATION CONTAINED IN THIS DRAWING IS THE SOLE PROPERTY OF OCP CHINA. PARTIAL OR TOTAL REPRODUCTION WITHOUT THE WRITTEN PERMISSION OF OCP CHINA IS PROHIBITED.	APPROVED BY Omar Acuna	CUSTOMER P/N: -	PROJECT NO.:	
	CUSTOMER REV.LEVEL: -	CUSTOMER NAME: -	DRAWING NO.:	
		DO NOT SCALE DRAWING	SCALE Free SIZE A4 SHEET 2 OF 2	