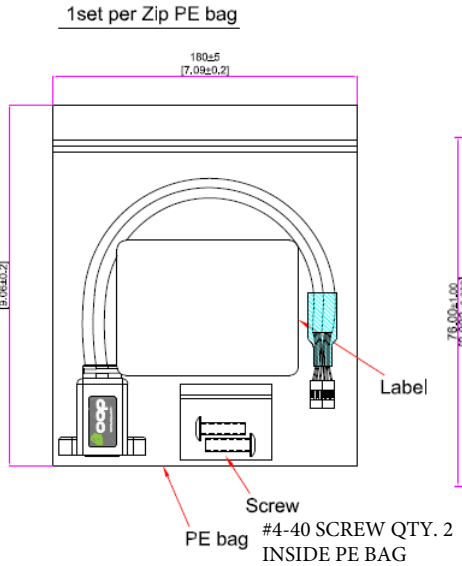
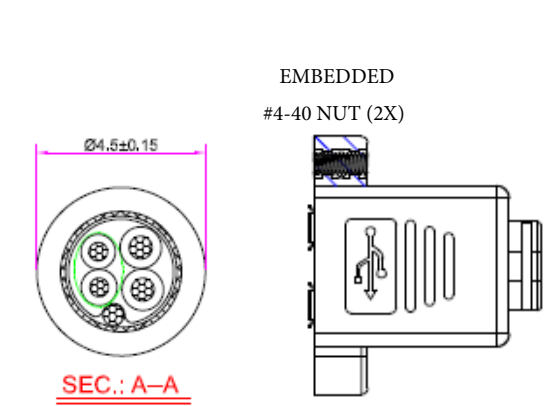
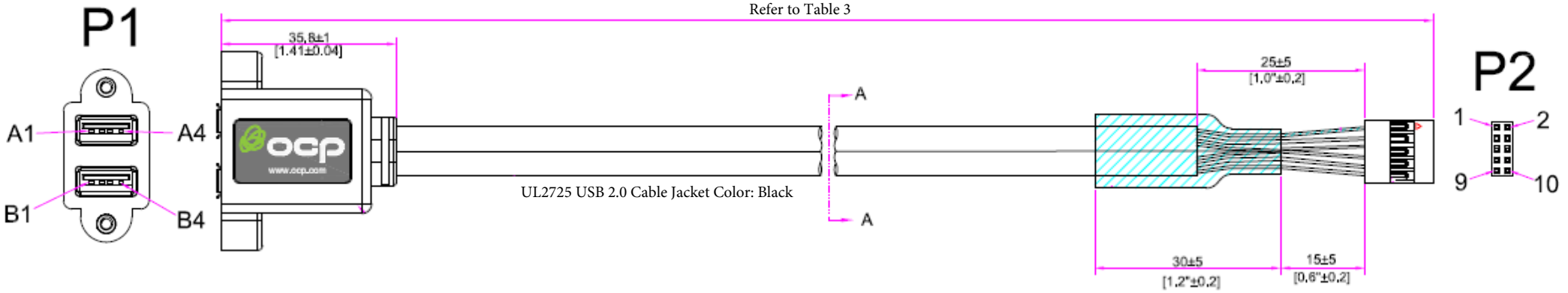


REVISIONS		
Rev.	DESCRIPTION	DATE
A	NEW DWG FRAME RELEASE	5/9/2022



**Label**

CONNECT WITH CONFIDENCE

Part Number: Refer to table 3.

Panel Mount Dual USB 2.0 A Female, to 10P Housing.

Length \*IN (Refer to table 3.) Rev: A

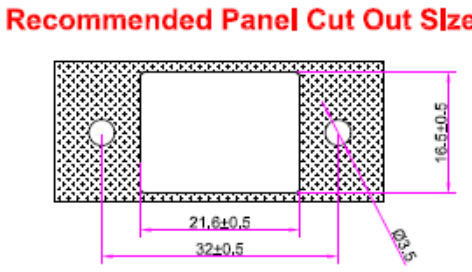
Domestic PH: 800-903-7816 International PH: 858-279-7400 www.ocp.com

**Table 2. Wiring diagram:**

P1	Color	P2
A1	Red	10
A2	White	8
A3	Green	6
A4	Black	4
Shell	Drain wire	2
Shell	Drain wire	2
B1	Red	9
B2	White	7
B3	Green	5
B4	Black	3

**Table 3.**

No.	OCP P/N	Length	
1	62-00186-01	12"±0.5	305mm±12
2	62-00186-02	24"±1.0	610mm±25
3	62-00186-03	36"±1.0	915mm±25
4	62-00186-04	48"±2.0	1220mm±50
5	62-00186-06	72"±2.0	1830mm±50



UNLESS OTHERWISE SPECIFIED: DIMENSIONS ARE IN MILLIMETERS [INCH] TOLERANCE ARE:

X ±0.5 ANGULAR ±0.5°  
 XX ±0.20  
 XXX ±0.1000

DRAWN BY: J. Perez  
 CHECKED BY:  
 APPROVED BY:

**PROPRIETARY AND CONFIDENTIAL**

THE INFORMATION CONTAINED IN THIS DRAWING IS THE SOLE PROPERTY OF OCP GROUP INC. PARTIAL OR TOTAL REPRODUCTION WITHOUT THE WRITTEN PERMISSION OF OCP GROUP INC IS PROHIBITED.

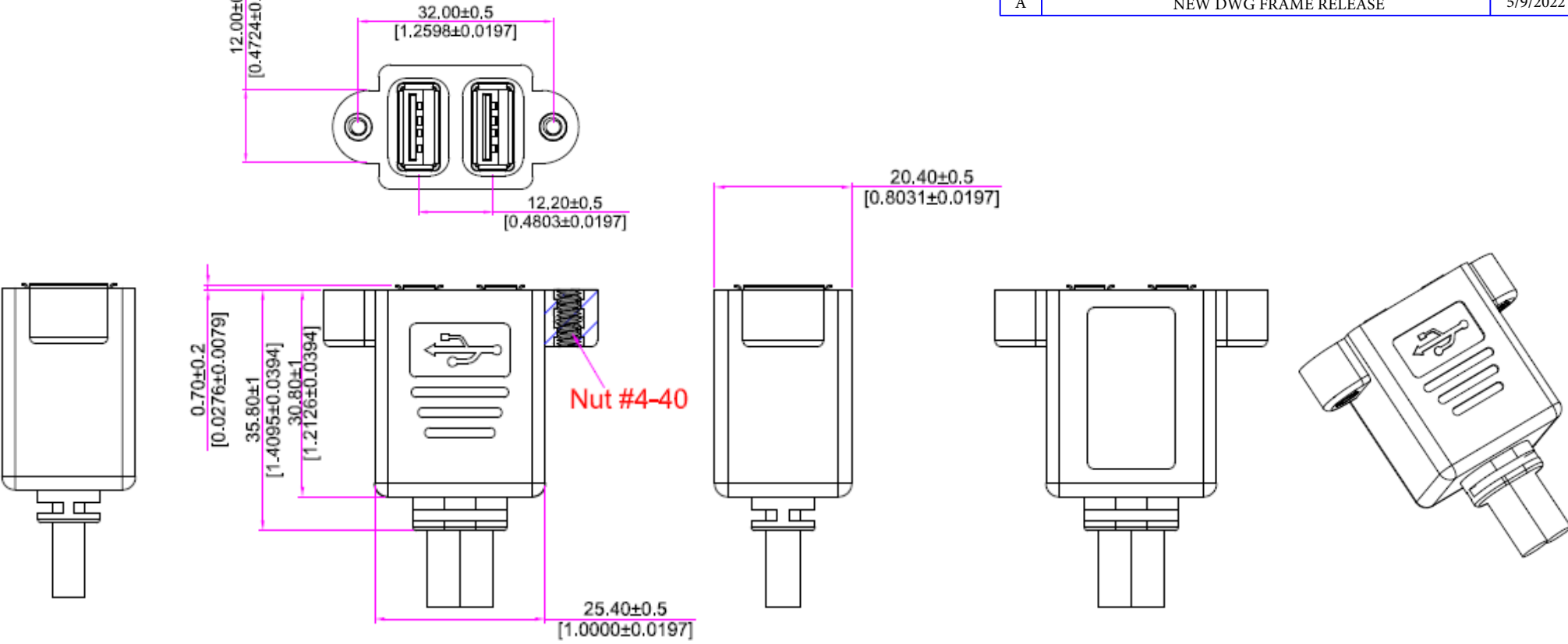
**TITLE:** USB 2.0 A DUAL PRT PNL MNT EXT CBL to 10POS SOCKET

**OCP P/N:** 62-00186-XX

**DRAWING NO:** **REV:** A

UNITS: MM SCALE: FREE SIZE: A4 SHEET 1 OF 1

REVISIONS		
Rev.	DESCRIPTION	DATE
A	NEW DWG FRAME RELEASE	5/9/2022



UNLESS OTHERWISE SPECIFIED:  
 DIMENSIONS ARE IN MILLIMETERS [INCH]  
 TOLERANCE ARE:

X  $\pm 0.5$  ANGULAR  $\pm 0.5^\circ$   
 XX  $\pm 0.20$   
 XXX  $\pm 0.1000$

DRAWN BY: J. Perez  
 CHECKED BY:  
 APPROVED BY:



**PROPRIETARY AND CONFIDENTIAL**

THE INFORMATION CONTAINED IN THIS DRAWING IS THE SOLE PROPERTY OF OCP GROUP INC. PARTIAL OR TOTAL REPRODUCTION WITHOUT THE WRITTEN PERMISSION OF OCP GROUP INC IS PROHIBITED.

TITLE: USB 2.0 A DUAL PRT PNL MNT EXT CBL to 10POS SOCKET

OCP P/N: 62-00186-XX

DRAWING NO: REV: A

UNITS: MM SCALE: FREE SIZE: A4 SHEET 1 OF 1