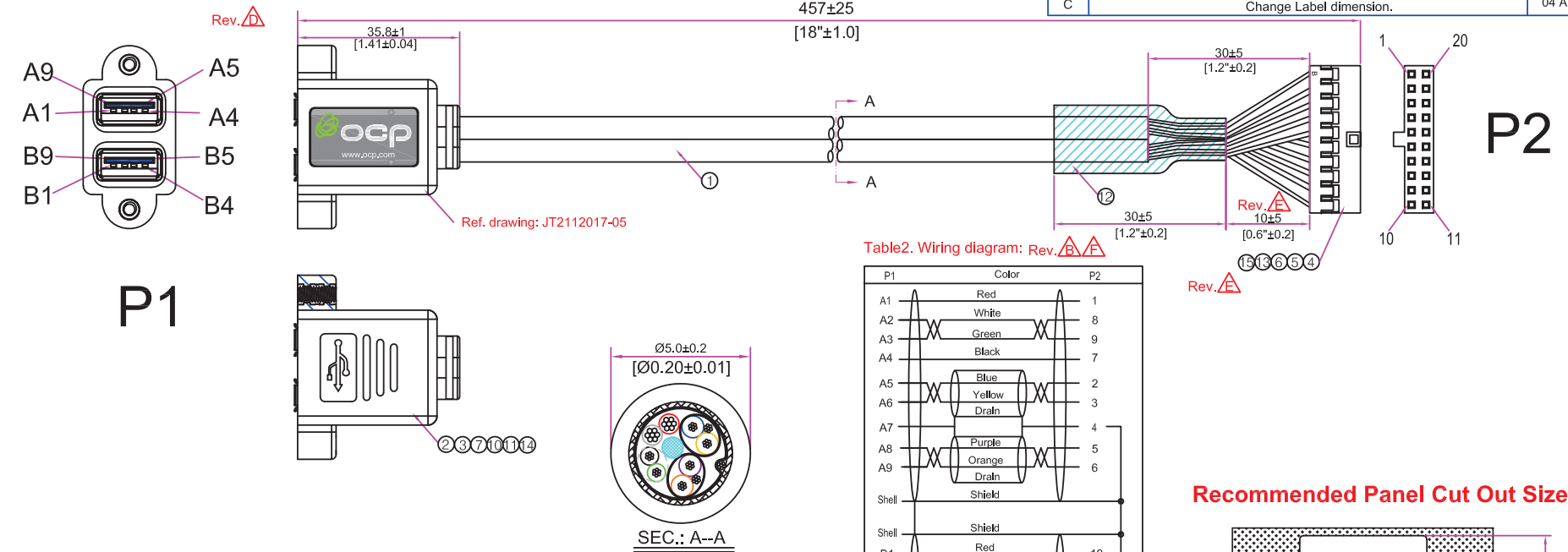


Figure1. Drawing and dimensions



ELECTRICAL CHARACTERISTICS:

1. Contact resistance:<1Ω
2. Insulation resistance:100V/DC,>50MΩ
3. All cable assemblies to be 100% tested for continuity,short & miswire.

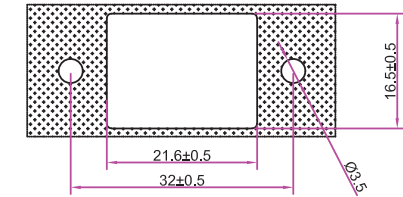
Note:

1. All the materials used to RoHS Directive 2011/65/EU and amendment 2015/863/EU.

Table2. Wiring diagram: Rev. A/A

P1	Color	P2
A1	Red	1
A2	White	8
A3	Green	9
A4	Black	7
A5	Blue	2
A6	Yellow	3
A7	Drain	4
A8	Purple	5
A9	Orange	6
Shell	Shield	
Shell	Shield	
B1	Red	19
B2	White	12
B3	Green	11
B4	Black	13
B5	Blue	18
B6	Yellow	17
B7	Drain	16
B8	Purple	15
B9	Orange	14
	N.C	10
	Key	20

Recommended Panel Cut Out Size



Rev.	DESCRIPTION	DATE
D	Change P1 end design.	26 Sep, 2022
E	Change P2 end design and dimension 10±5mm was 15±5mm.	19 Jun, 2023
F	Change wiring diagram.	19 Jun, 2023
G	Change customer Rev C was Rev B.	06 Oct, 2023

ocp China CONNECT WITH CONFIDENCE

OCN CHINA P/N: 016-CE-0649 (081-CE-0125)
 OCP P/N: 62-00219-01.5
 CUSTOMER P/N: -
 CUSTOMER REV.LEVEL: C Rev. A
 CUSTOMER NAME: -

TITLE: Dual USB 3.0 A Female, Panel Mount with #4-40 Nuts, to 20P Housing, UL2725
 PROJECT NO.: PJ12110046
 DRAWING NO.: JT2112017-03
 REV.: G

UNTS: mm / inch SCALE: Free SIZE: A4 SHEET 1 OF 2

UNLESS OTHERWISE SPECIFIED:
 DIMENSIONS ARE IN MILLIMETERS (INCH)
 TOLERANCES ARE:

.X	±0.5	ANGULAR ±0.5°
.XX	±0.20	
.XXX	±0.100	

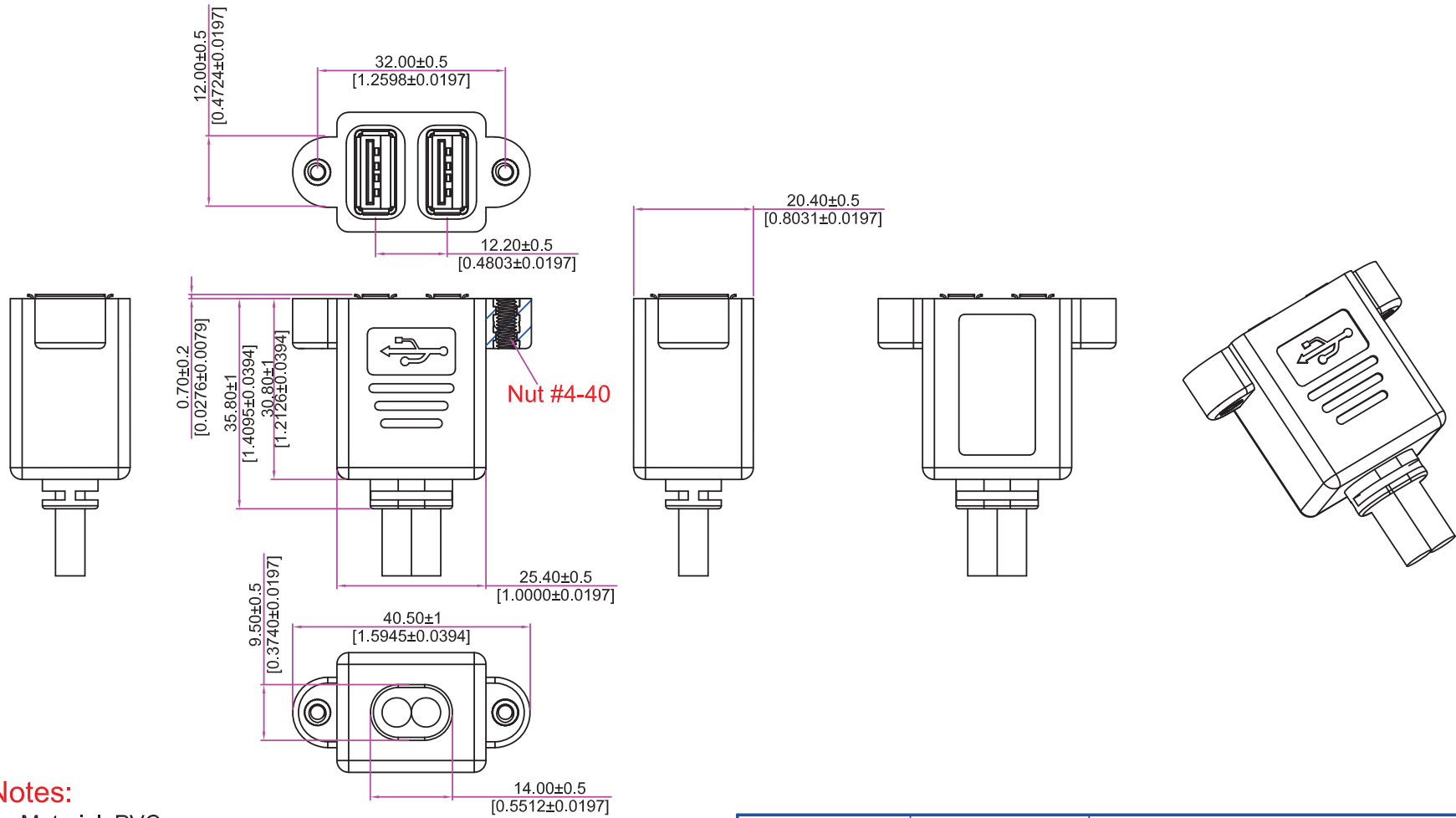
PROPRIETARY AND CONFIDENTIAL

THE INFORMATION CONTAINED IN THIS DRAWING IS THE SOLE PROPERTY OF DESIGNS FOR OCP CHINA. ANY REPRODUCTION IN PART OF AS WHOLE WITHOUT THE WRITTEN PERMISSION OF DESIGNS FOR OCP CHINA IS PROHIBITED.

DRAWN BY: Allan Xue
 CHECKED BY: Elsa Zhang
 APPROVED BY: Jay Chow

Drawing And Dimensions

REVISIONS		
Rev.	DESCRIPTION	DATE
A	Initial Release	02 Sep 2022



Notes:

1. Material: PVC
2. Parts must be free of flash, bubbles, flow & sink marks, knit lines or any other blemish.
3. Parting lines & burrs should be clean within 0.2mm of surface.
4. Gate removal should be clean within 0.2mm of surface.
5. All sharp edges will be applied with radii.

UNLESS OTHERWISE SPECIFIED DIMENSIONS ARE IN <u>MILLIMETERS</u> (INCHES)	DRAWN BY Allan Xue	 CONNECT WITH CONFIDENCE
	CHECKED BY Elsa Zhang	
TOLERANCES ARE:	APPROVED BY Jay Chow	OCP CHINA P/N: OCP P/N: CUSTOMER P/N: CUSTOMER REV.LEVEL: CUSTOMER NAME:
MILLIMETERS: .X ±0.5, .XX ±0.20, .XXX ±0.100 INCHES: .XX ±0.02, .XXX ±0.008, .XXXX ±0.0040 ANGULAR ±0.5°	PROPRIETARY AND CONFIDENTIAL THE INFORMATION CONTAINED IN THIS DRAWING IS THE SOLE PROPERTY OF OCP CHINA. PARTIAL OR TOTAL REPRODUCTION WITHOUT THE WRITTEN PERMISSION OF OCP CHINA IS PROHIBITED.	TITLE: Dual USB overmold PROJECT NO.: DRAWING NO.: JT2112017-05 REV.: A
DO NOT SCALE DRAWING		SCALE: Free SIZE: A4 SHEET 1 OF 1